

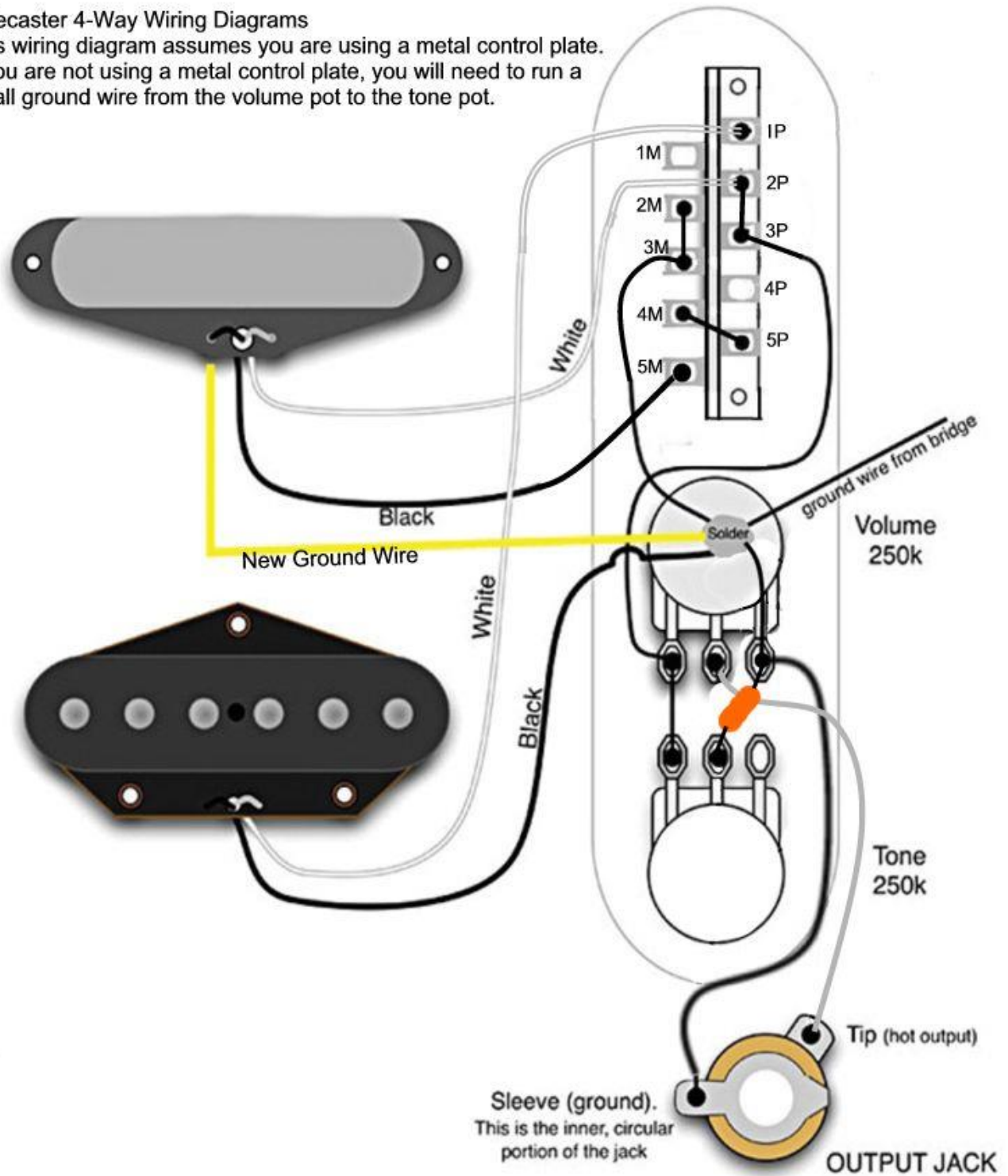
# Telecaster 4-Way Wiring Diagrams

This wiring diagram assumes you are using a metal control plate. If you are not using a metal control plate, you will need to run a small ground wire from the volume pot to the tone pot.

Wiring diagram courtesy Seymour Duncan Pickups

## Telecaster 4-Way Wiring Diagrams

This wiring diagram assumes you are using a metal control plate. If you are not using a metal control plate, you will need to run a small ground wire from the volume pot to the tone pot.



Wiring diagram courtesy Seymour Duncan Pickups

Here are two YouTube videos which will also help

<https://www.youtube.com/watch?v=ViplfXFjnXM> 26 minutes long

<https://www.youtube.com/watch?v=iV7fpEgD1fk> 7 minutes long

If your Neck Pickup is a 2 wire and has a metal cover, you will need to do this mod below.

**IF YOUR NECK PICKUP HAS 3 WIRES YOU DO NOT NEED TO DO THIS MOD**

Normally on a Tele neck pickup, the black wire from the **NECK** pickup goes to ground. However, in this harness the black wire goes to the switch. If you have a Chrome (metal) cover on your neck pickup, the black wire does two things. It completes the circuit when it goes to ground and it also grounds the chrome cover. It does this by using a jumper underneath the pickup. You will need to separate the metal cover from the pickup. You do this by disconnecting the jumper and soldering a new wire to the chrome/metal cover lug and running the other end to the back of the volume pot. Please see the diagrams below.

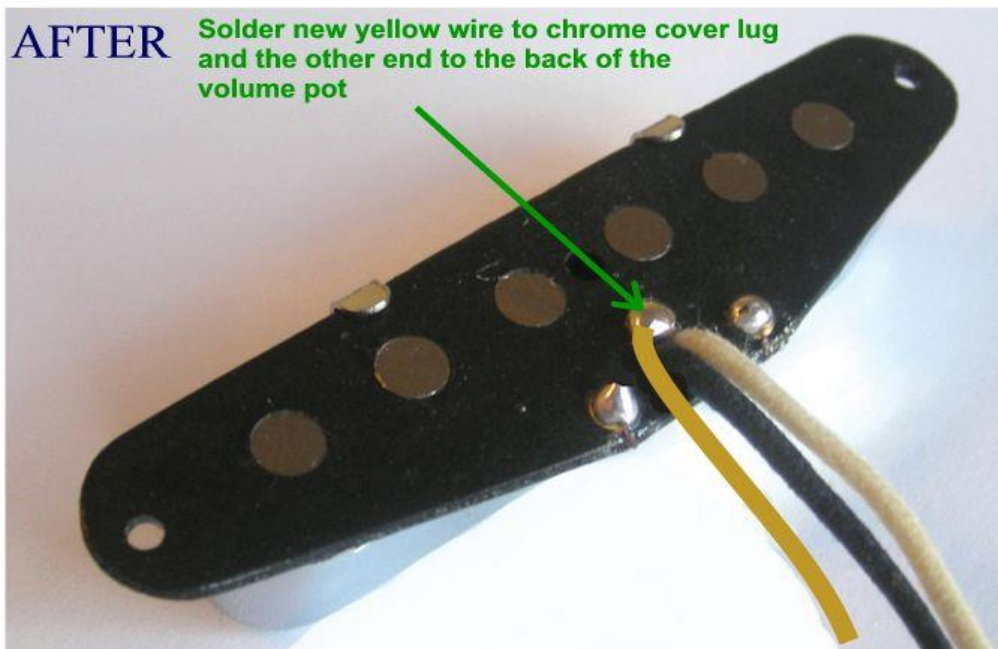
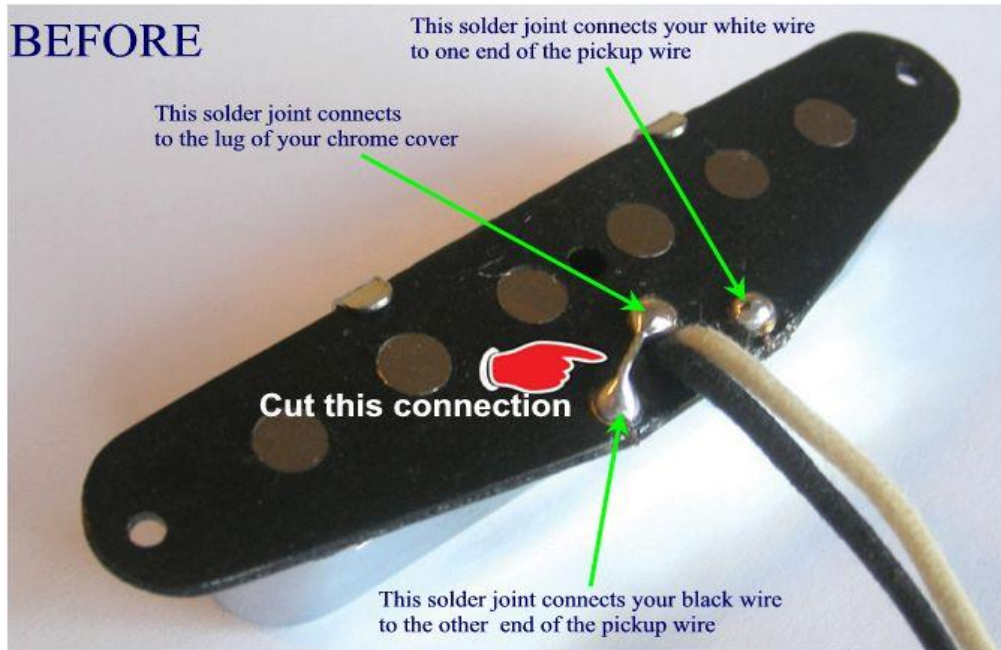


Image courtesy of [singlecoil.com](http://singlecoil.com).

Please contact me if you are not sure how to proceed.

# Wiring Diagram for DiMarzio Twang Kings

## DiMarzio Twang King 4-Way Diagram

Because the Twang Kings already have the 3rd wire on the neck pickup for the chrome cover, you will not need to do the mod on the page above.

