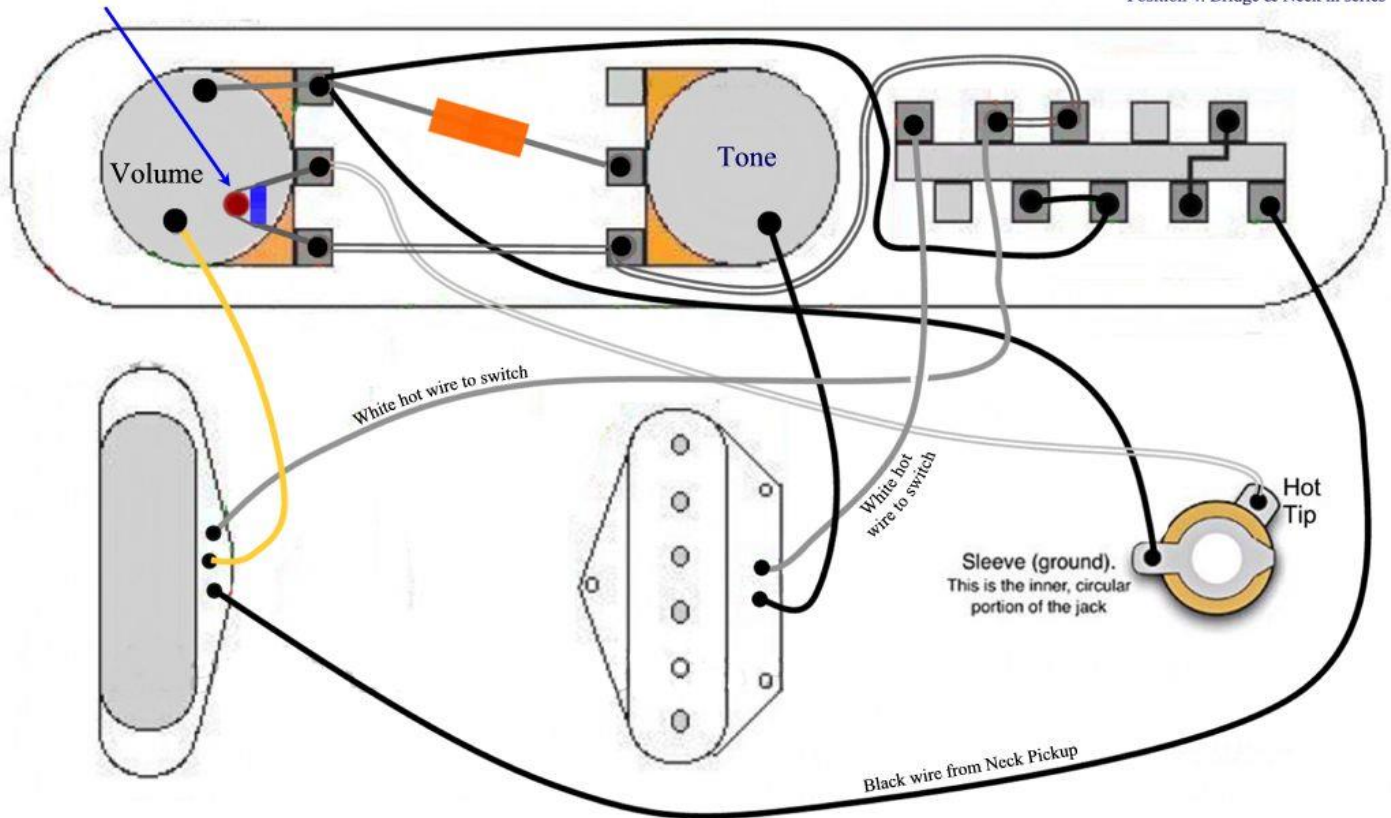


## Telecaster 4-Way Reverse Wiring Diagram

Before installing, please check that the Treble Bleed mod is not touching the back of the volume Pot

Position 1: Bridge  
Position 2: Bridge & Neck in parallel  
Position 3: Neck  
Position 4: Bridge & Neck in series



If your Neck Pickup has a metal cover, you will need to do this mod below

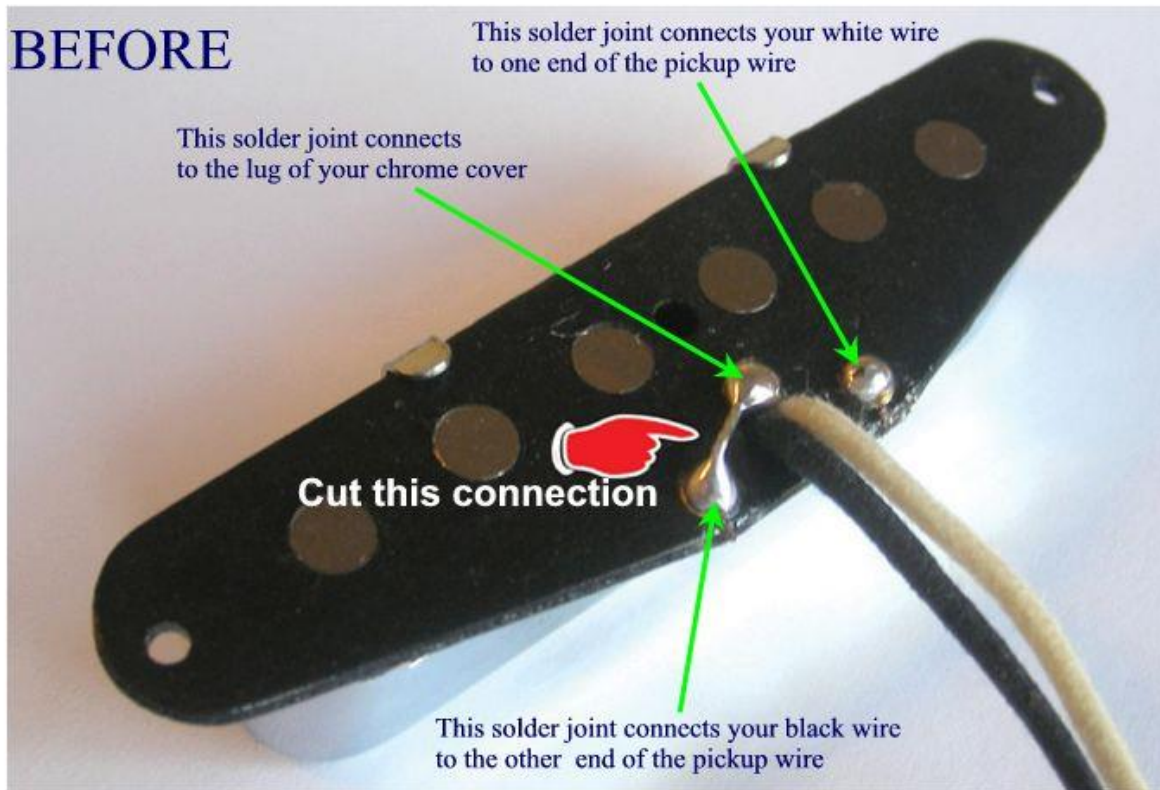
Normally on a Tele neck pickup, the black wire from the **NECK** pickup goes to ground. However in this harness the black wire goes to the switch. If you have a Chrome (metal) cover on your neck pickup, the black wire does two things. It completes the pickup circuit when it goes to ground and it also grounds the chrome cover. It does this by using a jumper underneath the pickup.

You will need to separate the metal cover from the pickup. You do this by disconnecting the jumper and soldering a new wire to the chrome/metal cover lug and running the other end to the back of the volume pot. Please see the diagrams below.

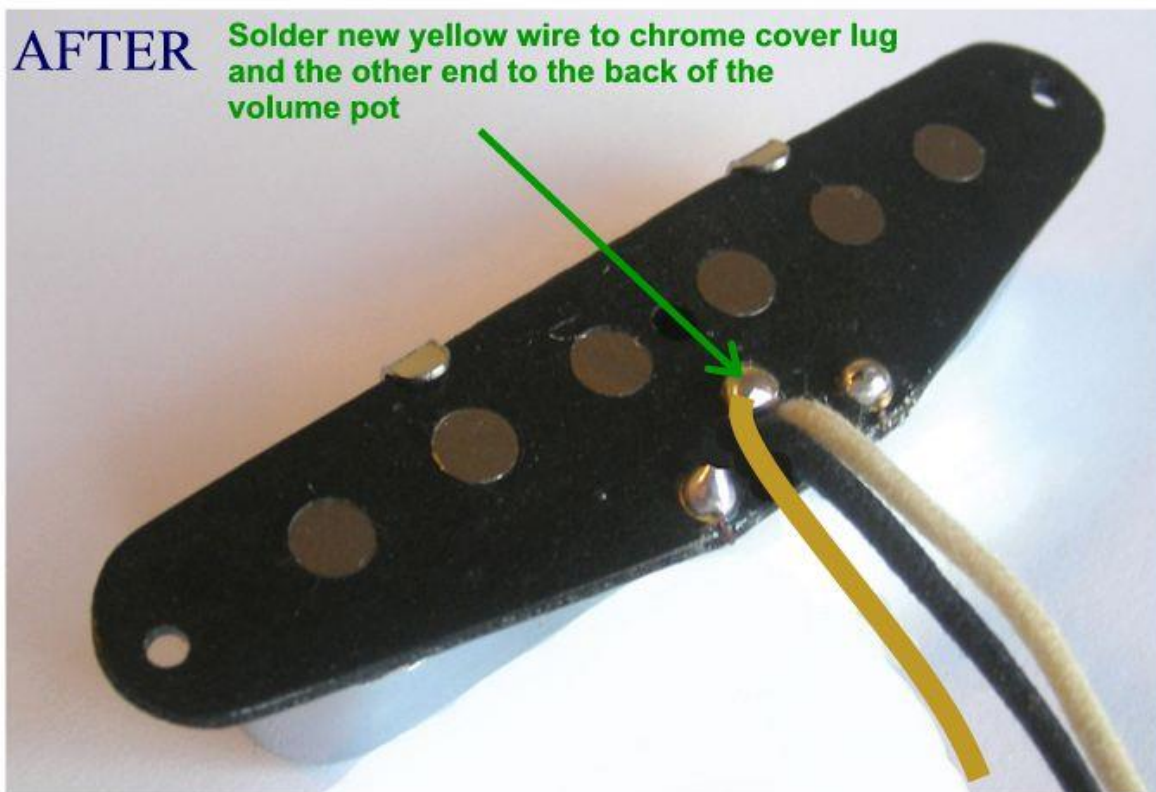
Please contact me if you are not sure how to proceed.

**If your neck pickup already has 3 wires, you will not need to do the mod below.**

# BEFORE



# AFTER



## Twang King Tele 4 way Reverse Wiring Diagram

With this Wiring Diagram, because it already has the 3<sup>rd</sup> wire you will not need to do the mod above on your neck pickup.

Dimarzio's grey wire is my yellow wire.

Telecaster 4-Way Reverse Wiring Diagram  
for Twang Kings

